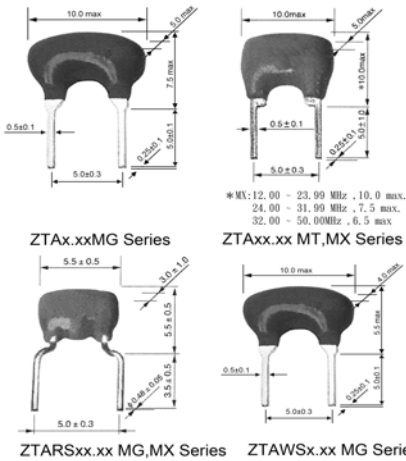


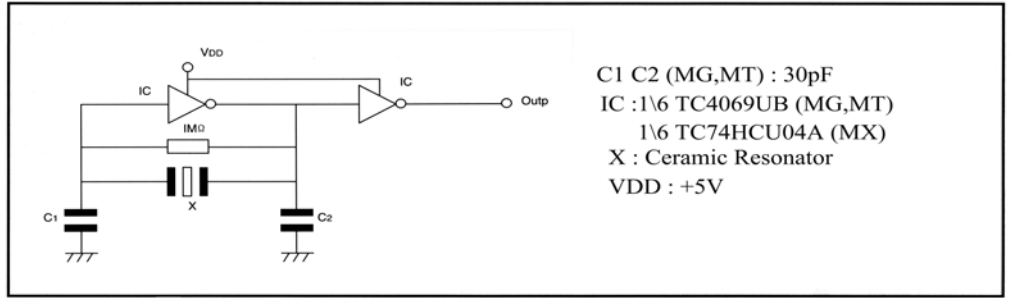
YIC Ceramic Resonator (ZTA/ZTARS/ZTAWs/ZTACC/ZTACR/ZTACS/ZTACV/ZTACW Series)

ZTA Series of Ceramic Resonator

1.80 - 50.00MHz



● TEST CIRCUIT FOR MOS IC



C1 C2 (MG,MT) : 30pF
 IC : 1\6 TC4069UB (MG,MT)
 1\6 TC74HCU04A (MX)
 X : Ceramic Resonator
 VDD : +5V

Part Number	Frequency Range	Circuit Constants	
		C1(PF)	C2(PF)
ZTA□□□MG	13.01 - 20.00	30	30
ZTARS□□□MX	20.01 - 25.99	15	15
ZTARS□□□MX	26.00 - 50.00	5	5

● TECHNICAL CHARACTERISTICS

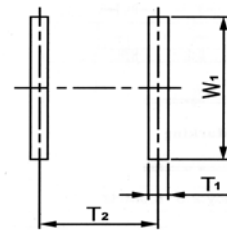
Part Number	Frequency Range (MHz)	Frequency Accuracy (25°C) max.	Stability Temperature (-20 ~ +80°C)	Operating Temperature (°C)	Aging For Ten Year (%)
ZTA□□□MG	1.80 - 6.00	±0.5	±0.3	-25 ~ +85	±0.3
ZTA□□□MT	6.00 - 13.00	±0.5	±0.3	-25 ~ +85	±0.3
ZTA□□□MX	13.01 - 50.00	±0.5	±0.3	-25 ~ +85	±0.3
ZTARS□□□MG	6.00 - 12.50	±0.5	±0.3	-25 ~ +85	±0.3
ZTARS□□□MX	16.00 - 50.00	±0.5	±0.3	-25 ~ +85	±0.3
ZTAWs□□□MG	1.80 - 6.00	±0.5	±0.3	-25 ~ +85	±0.3

ZTA - SMD Series of Ceramic Resonator

1.80 - 50.00MHz

● DIMENSIONS(mm)

● RECOMMENDED LAND PATTERN



Part Number	Dimensions (mm)		
	T1	T2	W1
ZTACC□□□MG	1.5±0.3	5.0±0.3	4.0±0.3
ZTACR□□□MG	0.8±0.2	3.0±0.2	2.6±0.2
ZTACS□□□MT/MX	1.3±0.2	3.9±0.2	5.1±0.2
ZTACV□□□MT/MX	1.0±0.2	3.0±0.2	4.1±0.2
ZTACW□□□MX	0.5±0.2	2.0±0.2	2.6±0.2

● TECHNICAL CHARACTERISTICS

Part Number	Frequency Range (MHz)	Frequency Accuracy (25°C) max.	Stability Temperature (-20 ~ +80°C)	Operating Temperature (°C)	Aging For Ten Year (%)
ZTACC□□□MG	2.00 - 8.00	±0.5	±0.3	-25 ~ +85	±0.3
ZTACR□□□MG	4.00 - 8.00	±0.5	±0.3	-25 ~ +85	±0.3
ZTACS□□□MT	6.00 - 13.00	±0.5	±0.3	-25 ~ +85	±0.3
ZTACV□□□MT	8.00 - 13.00	±0.5	±0.3	-25 ~ +85	±0.3
ZTACS□□□MX	13.00 - 50.00	±0.5	±0.3	-25 ~ +85	±0.3
ZTACV□□□MX	16.00 - 50.00	±0.5	±0.3	-25 ~ +85	±0.3
ZTACW□□□MX	20.00 - 50.00	±0.5	±0.3	-25 ~ +85	±0.3