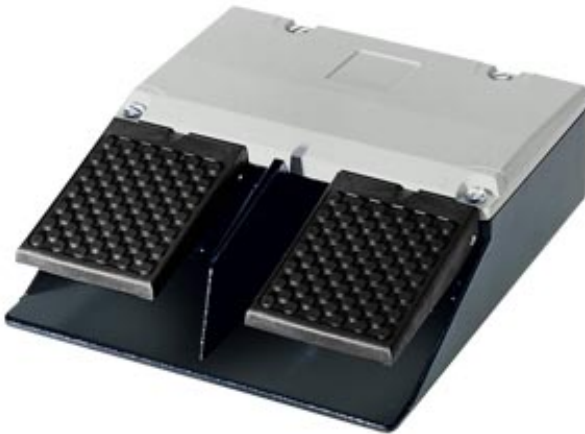


FOOT-OPERATED PUSHBUTTON TWO PEDALS,  
CABLE ENTRY M20X1,5 WITHOUT IP65,  
2NO+2NC



General technical details:		
product designation		momentary-contact foot switch
Product equipment / interlock		No
Product equipment / notch		No
Product component / covering		No
Operating current / at AC-15 / at 230 V / rated value	A	6
Number of switching steps		1
Number of the activation pedals		2
Item designation / according to DIN 40719 extendable after IEC 204-2 / according to IEC 750		S
Item designation / according to DIN EN 61346-2		S
Type of mounting		screw fixing
Enclosure:		
Material / of the enclosure		metal
Color / of the housing		black
Color / of top part of the enclosure		grey
Color		grey-black
Width	mm	193
Height	mm	221
Depth	mm	63

**Contact:**

Number of NC contacts / for auxiliary contacts		2
Number of NO contacts / for auxiliary contacts		2
Cable gland version		M25 x 1.5

**Ambient conditions:**

Protection class IP		IP65
Ambient temperature / during operating	°C	80
Ambient temperature / during operating	°C	-25

**Certificates/approvals:**

Suitability for use / safety cut-out switch		No
---	--	----

**General Product Approval****Declaration of Conformity**

CSA



GOST



EG-Konf.

**Shipping Approval****other**

ABS



LRS



PRS



RINA

[Confirmation](#)[other](#)**Further information:****Information- and Downloadcenter (Catalogs, Brochures,...)**<http://www.siemens.com/industrial-controls/catalogs>**Industry Mall (Online ordering system)**<http://www.siemens.com/industrial-controls/mall>**CAX-Online-Generator**<http://www.siemens.com/cax>**Service&Support (Manuals, Certificates, Characteristics, FAQs,...)**<http://support.automation.siemens.com/WWW/view/en/3SE2932-1AB20/all>**Image database (product images, 2D dimension drawings, 3D models, device circuit diagrams, ...)**[http://www.automation.siemens.com/bilddb/cax\\_en.aspx?mlfb=3SE2932-1AB20](http://www.automation.siemens.com/bilddb/cax_en.aspx?mlfb=3SE2932-1AB20)

last change:

Jan 21, 2013