



SAFETY POSITION SWITCH WITH SEPARATE ACTUATOR,
MOULDED-PLASTIC ENCLOSED,
OPERATION FROM THE SIDE AND THE FRONT,
3X(M20X1.5) 1NO+2NC,
PULLING FORCE 5N DELIVERED WITHOUT ACTUATOR

General technical details:

Product designation		safety position switch
Active principle		mechanical
Product function / status display		No
Design of the interface / for safety-related communication		without
Reference code / according to DIN 40719 extended according to IEC 204-2 / according to IEC 750		S
Reference code / according to DIN EN 61346-2		B

Enclosure:

Design of the housing		wide
Design of the housing / according to standard		No
Coating / of the enclosure		Other types
Material / of the enclosure		glass fiber reinforced thermoplast
Length of the sensor	mm	90
Width of the sensor	mm	52

Drive Head:

Design of the operating mechanism		without
-----------------------------------	--	---------

Contact:

Design of the contact element		slow-action contacts
-------------------------------	--	----------------------

Number of NC contacts / for auxiliary contacts		2
Number of NO contacts / for auxiliary contacts		1
Number of changeover contacts / for auxiliary contacts		0
Design of the switching function		positive opening
Design of the electrical connection		screw-type terminals

Ambient conditions:

Protection class IP IP65

Certificates/approvals:

Verification of suitability		CE / UL / CSA / CCC
Suitability for use / safety cut-out switch		Yes
Explosion protection category for gas		none
Explosion protection category for dust		none
Ambient temperature		
• during operating	°C	85 ... -30

General Product Approval

Declaration of Conformity



CCC



CSA



UL



EG-Konf.

Shipping Approval

other



ABS



LRS



PRS



RINA

[Confirmation](#)

[other](#)

Further information:

Information- and Downloadcenter (Catalogs, Brochures,...)

<http://www.siemens.com/industrial-controls/catalogs>

Industry Mall (Online ordering system)

<http://www.siemens.com/industrial-controls/mall>

CAX-Online-Generator

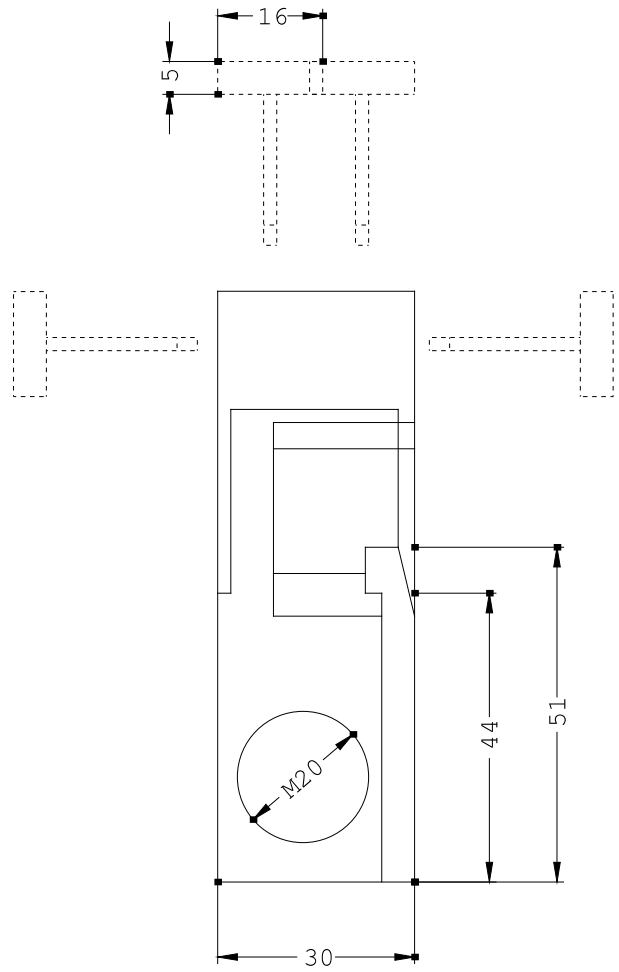
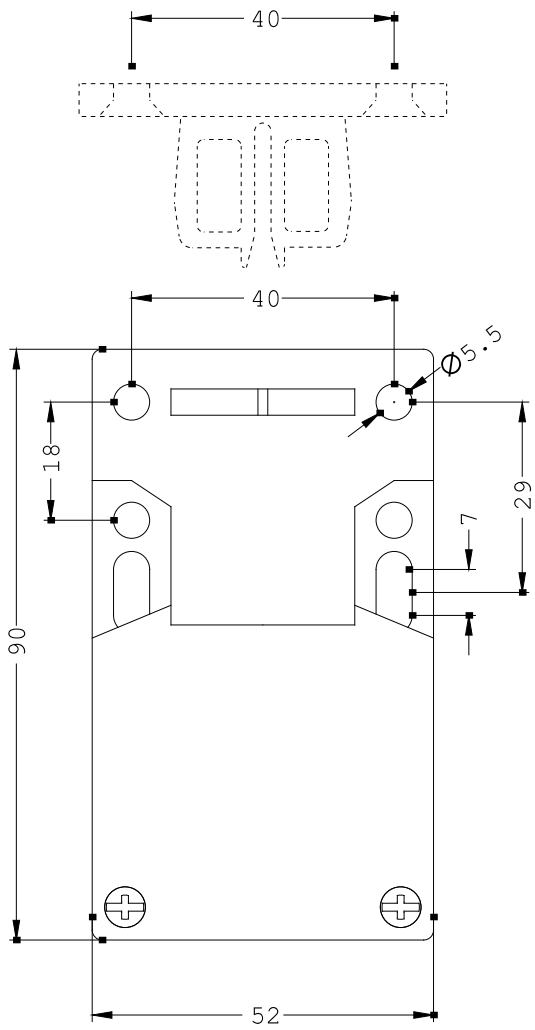
<http://www.siemens.com/cax>

Service&Support (Manuals, Certificates, Characteristics, FAQs,...)

<http://support.automation.siemens.com/WWW/view/en/3SE2243-0XX40/all>

Image database (product images, 2D dimension drawings, 3D models, device circuit diagrams, ...)

http://www.automation.siemens.com/bilddb/cax_en.aspx?mlfb=3SE2243-0XX40



last change:

Jun 16, 2014