

# V-Fuses

Fuse-Links for Battery Powered Forklifts and Industrial Trucks



Voltage rating:

DC 80 V

DC 24 V

Rated breaking capacity:

$$6 \times I_n \tau = L/R = 3 \text{ ms @ DC 48 V}$$

Current ratings:

20 A to 500 A

Standards:

DIN 43560 Part 1

Form A and B

DIN 72581/2



## V Fuses

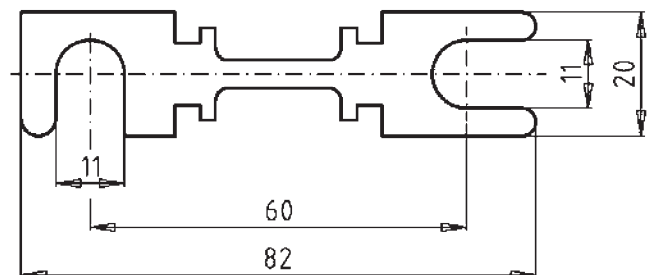
Fuse-Links for Battery Powered Industrial Trucks

Form  
**A - Open Type**

Rated Voltage  
**DC 80 V**

Standard  
**DIN 43560 Part 1**

Rated Current [A]	Part No.	Cold Resistance [mΩ]	Power Loss [W]	Weight [kg/100]	Pack
20	90 030 05.20	3.00	1.3	0.4	100
25	90 030 05.25	1.75	1.4	0.4	100
35	90 030 05.35	1.50	2.2	0.4	100
40	90 030 05.40	0.96	1.8	0.4	100
50	90 030 05.50	0.96	3.1	0.4	100
63	90 030 05.63	0.71	3.6	0.4	100
70	90 030 05.70	0.57	3.5	0.4	100
80	90 030 05.80	0.57	5.0	0.4	100
100	90 030 05.100	0.45	6.0	0.4	100
125	90 030 05.125	0.37	6.7	0.4	100
135	90 030 05.135	0.37	8.0	0.4	100
150	90 030 05.150	0.24	7.4	0.4	100
160	90 030 05.160	0.24	9.2	0.4	100
175	90 030 05.175	0.24	11	0.4	100
180	90 030 05.180	0.24	12	0.4	100
200	90 030 05.200	0.17	11	0.4	100
225	90 030 05.225	0.15	14	0.4	100
250	90 030 05.250	0.14	14	0.4	100
275	90 030 05.275	0.14	16	0.4	100
300	90 030 05.300	0.13	18	0.4	100
315	90 030 05.315	0.13	19	0.4	100
325	90 030 05.325	0.10	17	0.4	100
350	90 030 05.350	0.10	25	0.4	100
355	90 030 05.355	0.10	26	0.4	100
375	90 030 05.375	0.07	37	0.4	100
400	90 030 05.400	0.07	39	0.4	100
425	90 030 05.425	0.07	41	0.4	100
500	90 030 05.500	0.06	-	0.4	100





## V Fuses

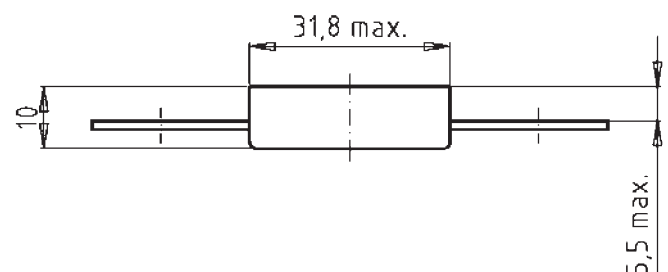
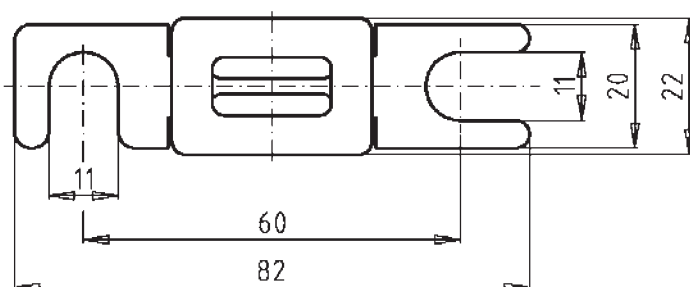
Fuse-Links for Battery Powered Industrial Trucks

Form  
**B - Enclosed Type**

Rated Voltage  
**DC 80 V**

Standard  
**DIN 43560 Part 1**

Rated Current [A]	Part No.	Cold Resistance [mΩ]	Power Loss [W]	Weight [kg/100]	Pack
20	90 058 05.20	3.00	1.3	2.0	20
25	90 058 05.25	1.75	1.4	2.0	20
35	90 058 05.35	1.50	2.2	2.0	20
40	90 058 05.40	0.96	1.8	2.0	20
50	90 058 05.50	0.96	3.1	2.0	20
63	90 058 05.63	0.71	3.6	2.0	20
70	90 058 05.70	0.57	3.5	2.0	20
80	90 058 05.80	0.57	5.0	2.0	20
100	90 058 05.100	0.45	6.0	2.0	20
125	90 058 05.125	0.37	6.7	2.0	20
135	90 058 05.135	0.37	8.0	2.0	20
150	90 058 05.150	0.24	7.4	2.0	20
160	90 058 05.160	0.24	9.2	2.0	20
175	90 058 05.175	0.24	11	2.0	20
180	90 058 05.180	0.24	12	2.0	20
200	90 058 05.200	0.17	11	2.0	20
225	90 058 05.225	0.15	14	2.0	20
250	90 058 05.250	0.14	14	2.0	20
275	90 058 05.275	0.14	16	2.0	20
300	90 058 05.300	0.13	18	2.0	20
315	90 058 05.315	0.13	19	2.0	20
325	90 058 05.325	0.10	17	2.0	20
350	90 058 05.350	0.10	25	2.0	20
355	90 058 05.355	0.10	26	2.0	20
375	90 058 05.375	0.07	37	2.0	20
400	90 058 05.400	0.07	39	3.0	20
425	90 058 05.425	0.07	41	3.0	20
500	90 058 05.500	0.06	-	3.0	20





## V Fuses

Fuse-Links for Battery Powered Industrial Trucks

Form  
**Open Type**

Rated Voltage  
**DC 24 V**

Standard  
**DIN 72581/2**

Rated Current [A]	Part No.	Cold Resistance [mΩ]	Power I Loss [W]	Weight [kg/100]	Pack
25	90 054 09.25			0.025	100
30	90 054 09.30			0.025	100
35	90 054 09.35			0.025	100
40	90 054 09.40			0.025	100
50	90 054 09.50			0.05	100
63	90 054 09.63			0.05	100
80	90 054 09.80			0.11	100
100	90 054 09.100			0.13	100
125	90 054 09.125			0.13	100
150	90 054 09.150			0.18	100

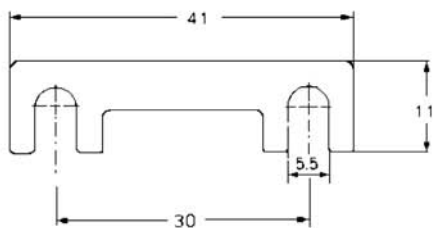
Form  
**Enclosed Type**

Rated Voltage  
**DC 24 V**

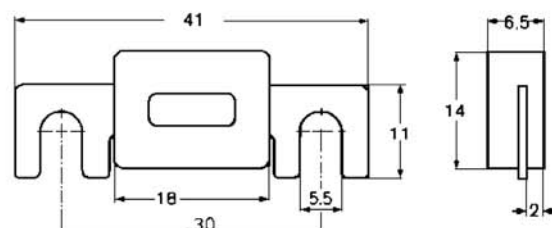
Standard  
**DIN 72581/2**

Rated Current [A]	Part No.	Cold Resistance [mΩ]	Power Loss [W]	Weight [kg/100]	Pack
25	90 059 09.25			0.39	40
30	90 059 09.30			0.39	40
35	90 059 09.35			0.39	40
40	90 059 09.40			0.39	40
50	90 059 09.50			0.39	40
63	90 059 09.63			0.39	40
80	90 059 09.80			0.39	40
100	90 059 09.100			0.39	40
125	90 059 09.125			0.49	40
150	90 059 09.150			0.49	40

Part No. 90 054 09  
fuse strips, open



Part No. 90 059 09  
fuse strips, enclosed





## V Fuses

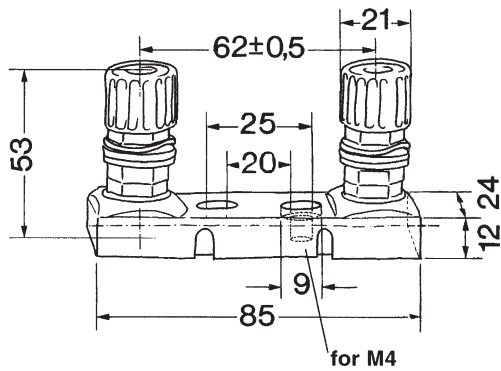
Fuse-Links for Battery Powered Industrial Trucks

Form  
**Fuse-Base**

Rated Voltage  
**DC 80 V**

Standard  
**DIN 43560/2**

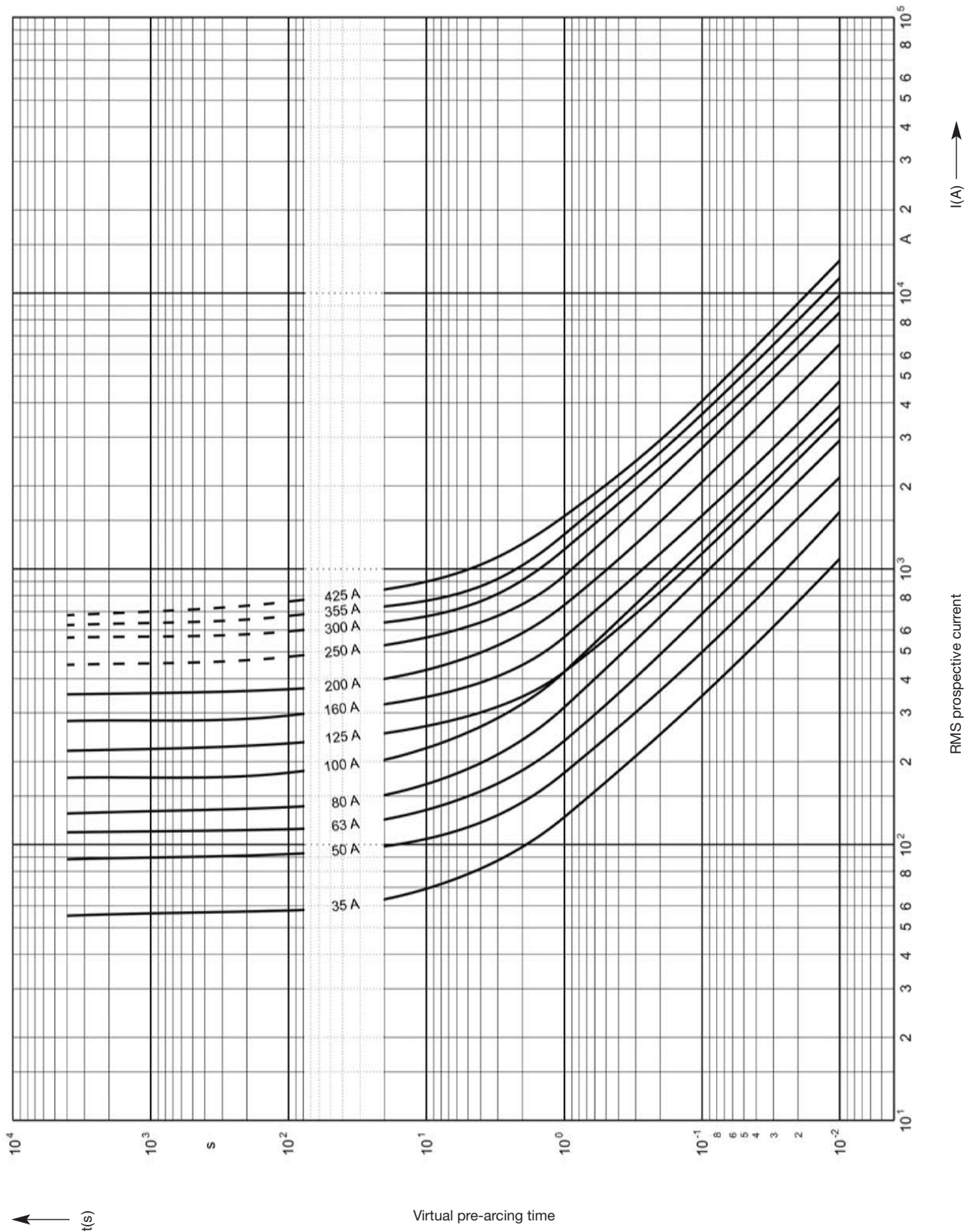
Part No.	Weight [kg/100]	Pack
91 030 01	0.13	20

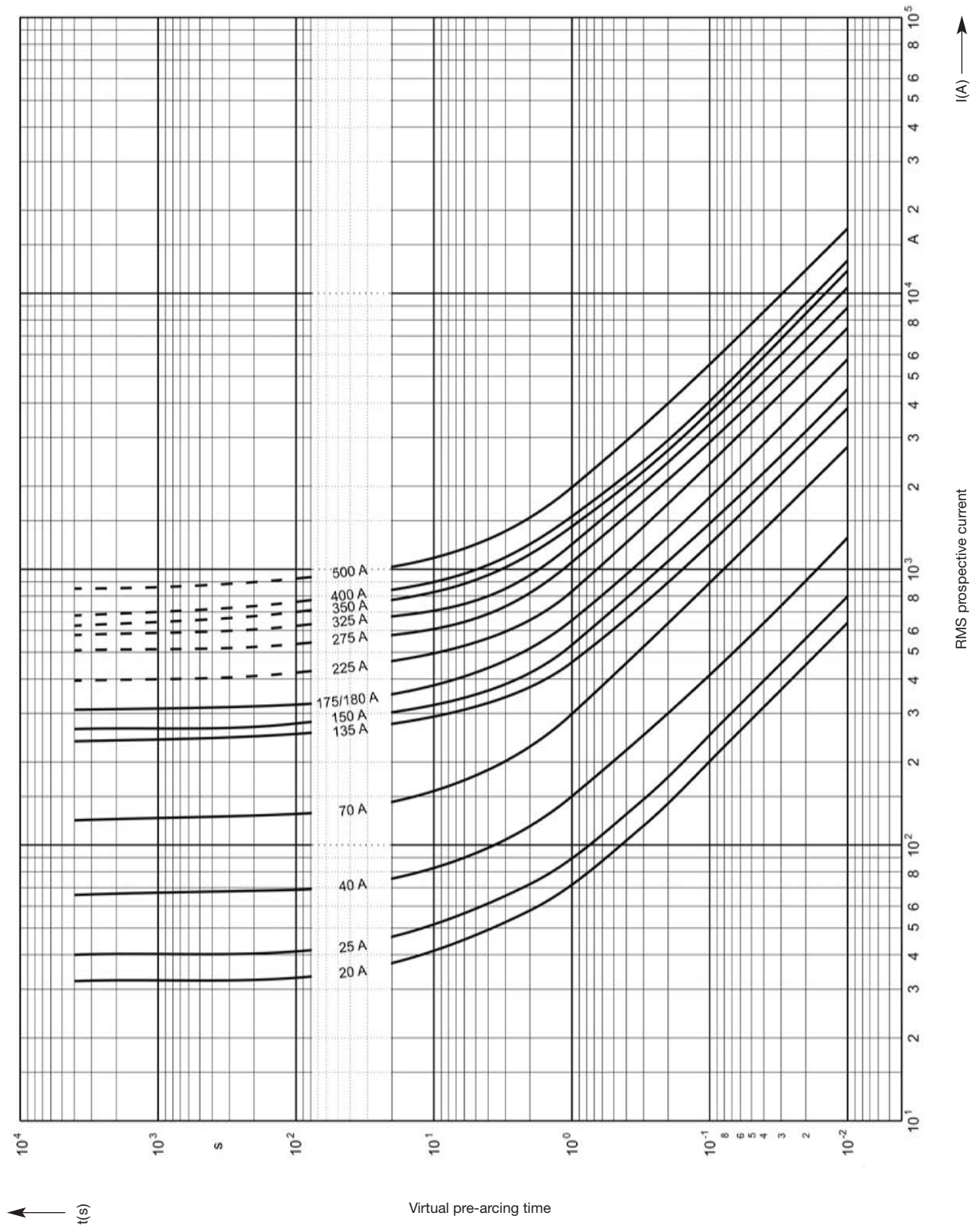


Time-Current Characteristics

80 V

DIN 43560 Part 1

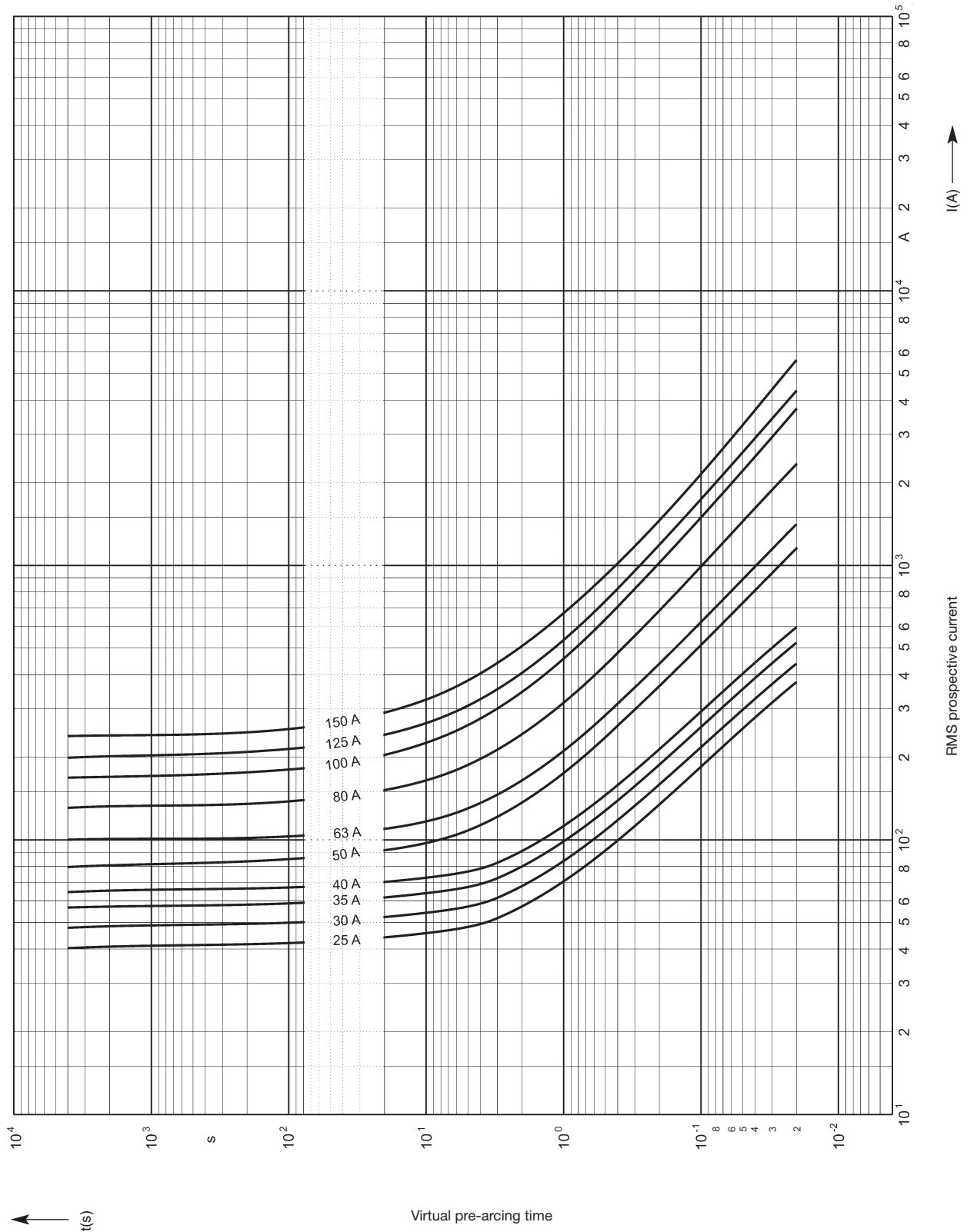




Time-Current Characteristics  
Fuse-Strips Open

24 V

DIN 72581/2





Time-Current Characteristics  
Fuse-Strips Enclosed

24 V

DIN 72581/2

