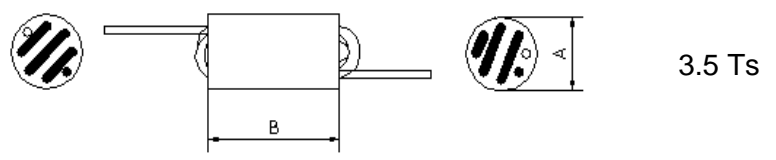
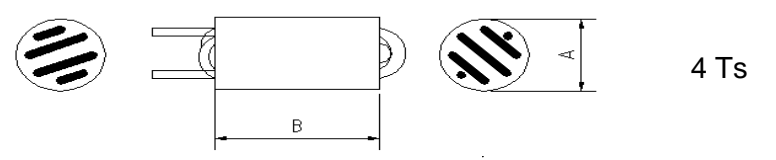


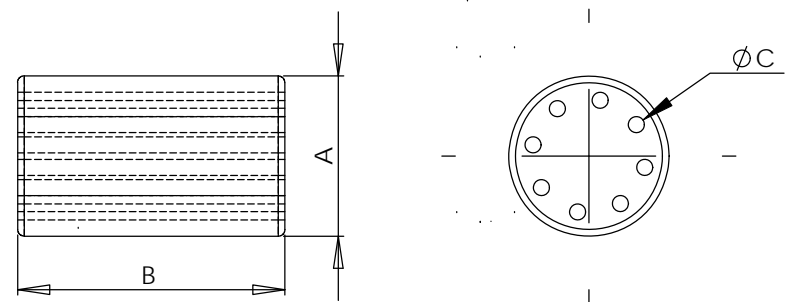
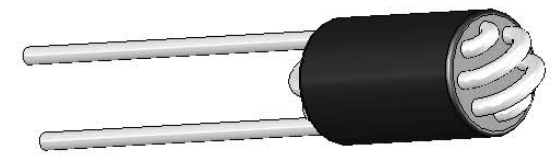
REV.	MODIFICATION.	DATE	DRN
01	NEW DRAWING CO2010985	02/09/10	SF



3.5 Ts



4 Ts



- NOTES.
- 1) See drawing 06-087 sheet 2 of 2 for Impedance graphs.
 - 2) Impedance figures are typical values.
 - 3) Packaging information is only a guide & subject to variation.

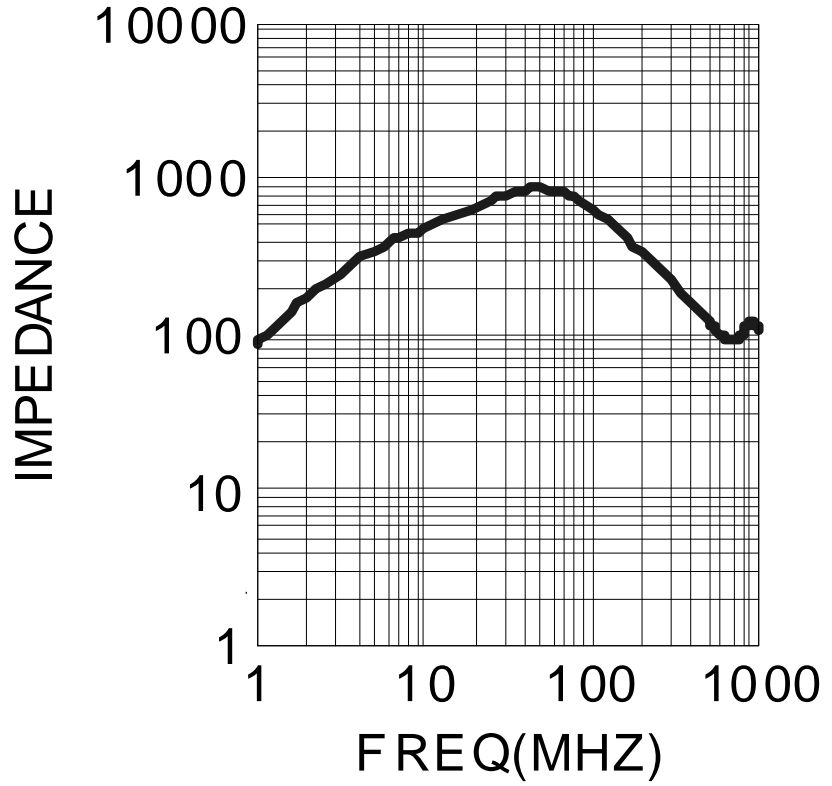
Ferrite Material: K5B RMS-303 • Glue RMS-301 • Wires RMS-306							
RRH8	A (mm)	B (mm)	C (mm)	IMPEDANCE(Ω)		Standard Pack (Pieces)	Number of Turns
				25MHz	100MHz		
RRH8-2-35-K5B	5.20	10.00	0.85	726	667	500	3.5
RRH8-2-40-K5B				754	680	500	4
Standard Pack sizes may vary							

INFORMATION CONTAINED IN THIS DOCUMENT IS CONFIDENTIAL TO RICHCO INTERNATIONAL Co. Ltd. AND MAY NOT BE DISCLOSED OR REPRODUCED IN WHOLE OR PART WITHOUT THEIR WRITTEN CONSENT.

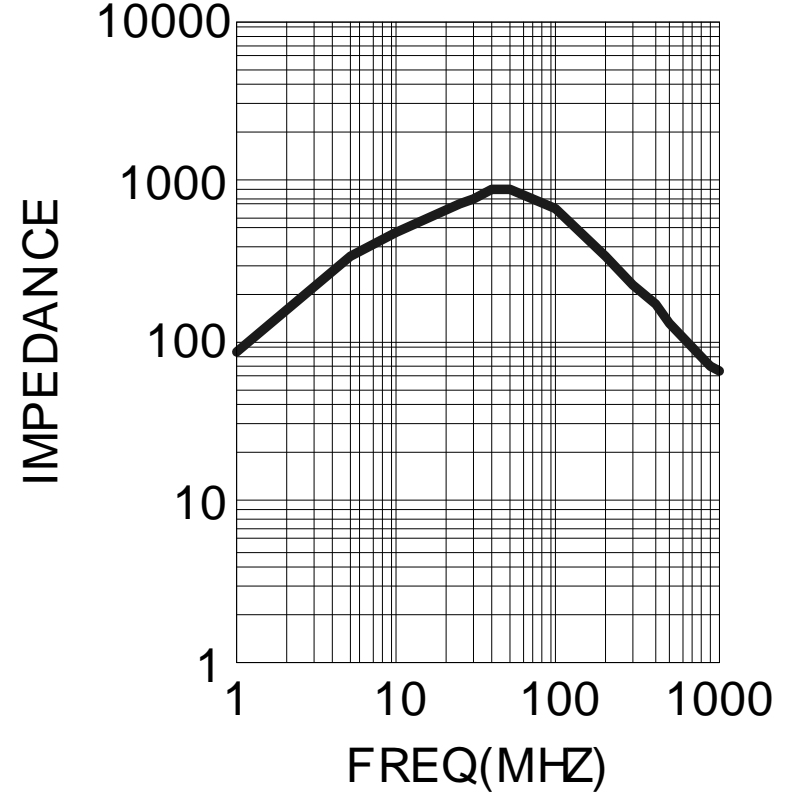
RICHCO, INC. WWW.RICHCO-INC.COM		ALL DIMENSIONS IN MM GENERAL TOLERANCES ±0.25 UNLESS OTHERWISE STATED 1 DECIMAL PLACE ± 2 DECIMAL PLACES ± ANGULAR ±1°	THIRD ANGLE
MATERIAL: See Table		COLOUR: See Table	
DESCRIPTION: RRH8 Ferrite Wound Beads		PART No: See Table	
DRG No: 06-087	NPR No:	Mass:(g)	SHEET SIZE A3
DRN SF	DATE 02/09/10	CHKD CT	DATE 02/09/10
SCALE NTS		SHEET No. 1 OF 2	

REV.	MODIFICATION.	DATE	DRN
01	NEW DRAWING	02/09/10	SF

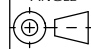
RRH8-2-35-K5B



RRH8-2-40-K5B



INFORMATION CONTAINED IN THIS DOCUMENT IS CONFIDENTIAL TO RICHCO INTERNATIONAL Co. Ltd. AND MAY NOT BE DISCLOSED OR REPRODUCED IN WHOLE OR PART WITHOUT THEIR WRITTEN CONSENT.

RICHCO, INC. WWW.RICHCO-INC.COM	ALL DIMENSIONS IN MM GENERAL TOLERANCES ±0.25 UNLESS OTHERWISE STATED 1 DECIMAL PLACE ± 2 DECIMAL PLACES ± ANGULAR ±1°	THIRD ANGLE 
---	---	--

MATERIAL: See Table on Sheet 1		COLOUR: See Table	
DESCRIPTION: RRH8 Ferrite Wound Beads		PART No: See Table	
DRG No: 06-087	NPR No:	Mass:(g)	SHEET SIZE A3
DRN SF	DATE 02/09/10	CHKD CT	DATE 02/09/10
SCALE NTS		SHEET No. 1 OF 2	