

NEF 1- 1



M 3



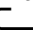

"...5"





8

Interference filter
Housing width 25
Enclosed housing

(IEC)	rigid	flexible	
[mm ²]	solid	stranded	AWG
Connection data	0.2-4	0.2-2.5	24-12

Description	Nom.current [A]	Type	Order No.	Pcs. Pkt.
Interference filter with universal foot for mounting on  or 	1	NEF 1- 1	27 94 12 3	10

Technical data

Tested:	acc. to EN 133 200: 1994/DIN EN 133 200/VDE 0565 p. 3-1: 1996-06	
Nominal voltage U_N :	230 V AC	
Max. rated voltage U_C :	250 V AC	
Nominal current I_N (with 40 °C):	1 A	
Discharge current to PE with U_N :	≤ 0.5 mA	
Input attenuation (50 Ω)	normal/common	≥ 65 dB/≥ 45 dB (1 MHz)
Inductance per path 1-3/2-4:	10 mH/10 mH	
Discharge resistance:	1 MΩ	
Max. required back-up fuse:	1 A	
Temperature range:	– 25 °C to + 85 °C (HPF)	
Protection type acc. to IEC 529/ EN 60 529:	IP 20	
Approvals:	 	

Type of housing

Polyamide PA non-reinforced, see [product-line info](#)

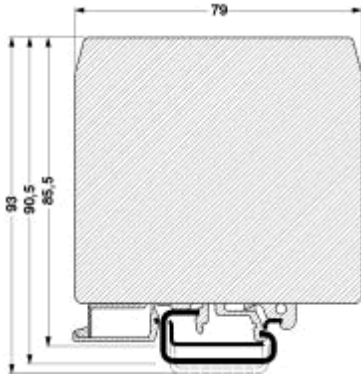
color: black

Torque value of terminals, see [product-line info](#)

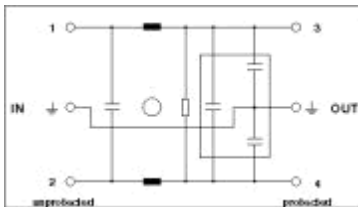
Marking systems and mounting material, see catalog part 3/4.

The rated cross section refers to untreated conductors without ferrules, see [product-line info](#)

Dimensional drawing



Block diagram



Diagram

