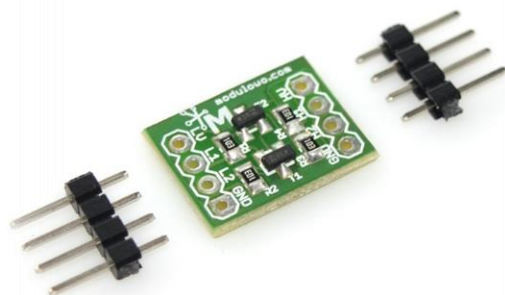


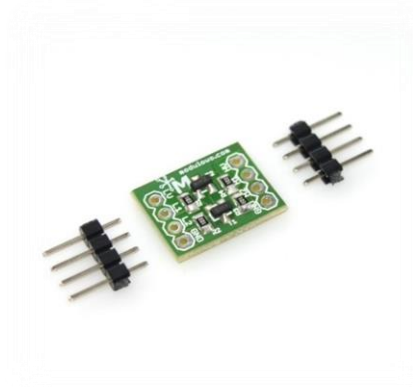
MOD - 28

I2C Bi-Directional Logic Level Converter



Store: store.modulowo.com
Tutorials: academy.modulowo.com
Documentation and schematics: products.modulowo.com
Software and projects: app.modulowo.com
Blog: blog.modulowo.com

Modułowo sp. z o.o.
ul. Mokotowska 1,
00-640 Warsaw, POLAND
E-mail: info@modulowo.com



Electronic circuits can tolerate certain voltage values. This converter allows you to connect two circuits with different supply voltages. It is designed for bi-directional I2C transmission.

The module is equipped with the LV, L1, L2 pins to connect a circuit with lower voltage, and with the HV, H1, H2 pins to connect a circuit with higher voltage. SDA and SCL lines of the I2C interface should be connected to the L1, L2 and H1, H2 lines respectively, depending on the operating voltage.

Note! A reverse connection can permanently damage the connected circuits.

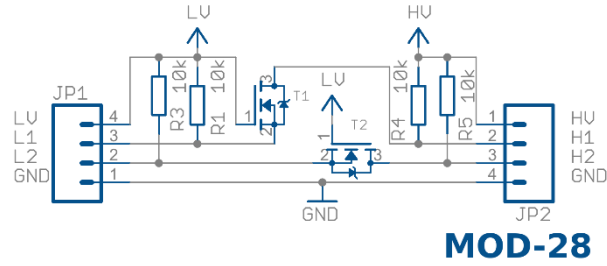
Specifications:

Code and Product Name	MOD-28 I2C Bi-Directional Logic Level Converter
Input pins	4-pin (LV, L1, L2, GND)
Output Pins	4-pin (HV, H1, H2, GND)
Power	LV: +3.3V, HV: +5V
LED Indication	no
Dimensions	17 mm x 13 mm
Additional Information	a reverse connection can permanently damage the connected circuits.

Your list of modules

Each module has a unique serial number. Go to www.modulowo.com/list, enter the serial number and add the module to your list. This will allow quick access to the documentation and software.

Schematic:



Pinouts:

