

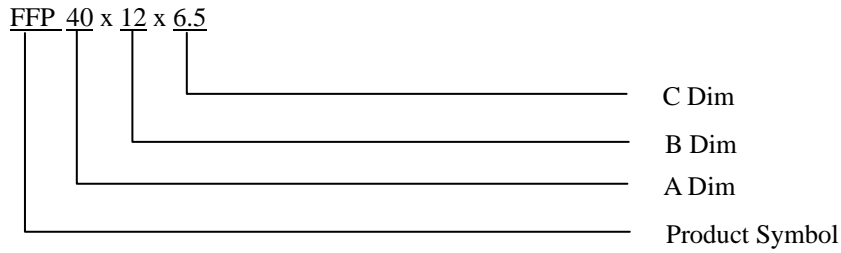
FLAT CABLE EMI CORES / FFP TYPE

APPLICATIONS

- ◆ Internal floppy disk and harddisk ribbon cables
- ◆ Internal ribbon cables between circuit boards and data connectors
- ◆ Internal ribbon cables with series digital signal busses



ORDERING CODE



SHAPES

Fig.1

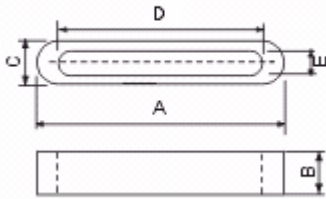


Fig.2

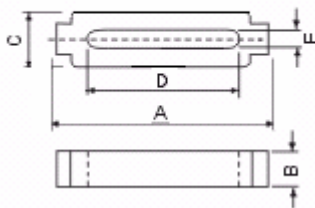
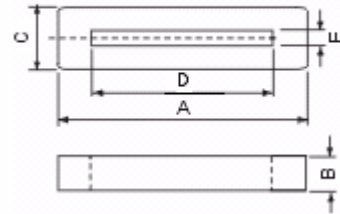


Fig.3



DIMENSIONS (UNIT: mm)

Part No.	Fig.	Dimension					Impedance (Ω) Min	
		A	B	C	D	E	25MHz	100MHz
FFP15x7x4	1	150±0.5	70±0.3	40±0.2	125±0.4	15±0.3	25	40
FFP15x15x2.75	1	150±0.5	150±0.5	2.75±0.3	11.0±0.4	0.7±0.2	30	70
FFP16x12x5	1	160±0.5	120±0.4	50±0.3	115±0.4	0.85±0.2	35	95
FFP19x6x6.5	1	160±0.5	60±0.3	65±0.3	135±0.6	15±0.3	20	45
FFP19x12x6.5	1	190±0.8	120±0.4	65±0.3	135±0.6	15±0.3	34	98
FFP23.3x7x3	3	233±0.6	70±0.3	30±0.3	200±0.8	0.9±0.2	20	60
FFP23.8x6x7.5	1	238±0.7	60±0.4	75±0.5	181±0.6	2.25±0.25	20	70
FFP23.8x15x6.3	1	238±0.6	150±0.5	63±0.3	188±0.5	1.1±0.3	40	90
FFP25x15x5	1	250±0.8	150±0.5	50±0.3	210±0.8	10±0.3	38	100
FFP28x14.6x7.7	2	280±0.8	146±0.5	7.7±0.4	230±0.8	15±0.3	45	90
FFP29x10x8	1	290±0.8	100±0.5	80±0.4	220±0.6	20±0.3	30	90
FFP31.5x5x3.5	1	315±0.8	50±0.3	3.5±0.3	280±0.8	0.8±0.2	15	35

FLAT CABLE EMI CORES / FFP TYPE

FFP31.5x12x3.5	1	315±08	120±04	35±03	280±08	08±02	25	65
FFP33x11.5x7.5	1	330±08	115±04	75±04	280±08	28±03	40	95
FFP33.5x15x6.5	1	330±08	150±05	65±04	280±08	35±05	32	80
FFP33.5x12x6.5	1	335±08	120±04	65±03	290±08	15±03	30	75
FFP38x25.5x12	3	380±10	255±07	120±04	265±08	20±04	76	195
FFP38.8x28.6x26	1	388±10	286±07	260±06	260±08	1295±04	45	60
FFP39x12x4	3	390±10	120±04	40±03	350±08	08±02	30	70
FFP40x12x6.5	1	400±10	120±04	65±03	350±10	13±03	35	88
FFP40x18x6.5	1	400±10	180±05	65±03	350±10	13±03	36	105
FFP40x28x6.5	1	400±10	280±07	65±03	340±10	13±03	70	150
FFP45.2x12x6.5	1	452±10	120±04	65±03	400±10	13±03	37	110
FFP45.2x20x6.5	1	452±10	200±05	65±03	400±10	13±03	61	145
FFP45x28.5x12.5	3	450±10	285±07	125±04	345±10	15±03	74	158
FFP49.6x12x6.5	1	496±12	120±04	65±03	440±10	13±03	25	70
FFP50x8x5	1	500±08	80±04	50±05	460±07	10±03	25	56
FFP57.6x12x6.5	1	576±12	120±04	65±03	520±10	13±03	30	75
FFP63.5x12x12	3	635±12	127±04	127±04	520±10	185±04	100	160
FFP63.5x12x12.7	3	635±12	120±04	127±04	520±10	17±04	50	110
FFP63.5x32x12.7	3	635±12	320±10	127±04	520±10	17±04	100	160

