

82344766-3 Watts

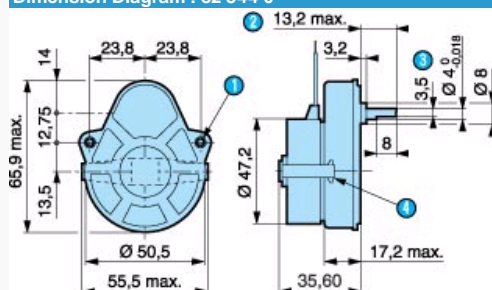


- ✓ Mechanical strength: 0,5 Nm
- ✓ Constant speed, dependent on supply frequency
- ✓ Wide range of speeds available
- ✓ Direction of rotation controlled by long-life mechanical anti-return device
- ✓ Permanent magnet rotor

Motor

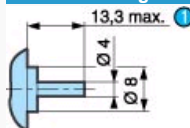
Gearbox	81 021 0
Maximum permitted torque from gearmotor under continuous conditions for 1 millions turns of the gearmotor (Nm)	0.5
Axial load static (daN)	1
Radial load static (daN)	8
Absorbed power (W)	3
Motor output (W)	0,16
Maximum temperature rise (°C)	55
Ambient temperature (°C)	-5 → +60
Weight (g)	160
Wires length mm (approximately)	250
Protection rating	IP40

Dimension Diagram : 82 344 0



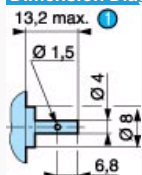
N°	Legend
1	2 fixing holes Ø 3.2
2	(pushed-in shaft)
3	3.5 across flat
4	Fixing clip

Dimension Diagram : Shaft 79 200 967



N°	Legend
1	(pushed-in shaft)

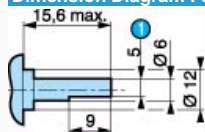
Dimension Diagram : Shaft 79 200 779



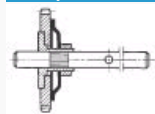
N°	Legend
----	--------

1

(pushed-in shaft)

Dimension Diagram : Shaft 70 999 421 SP1295-10

N°	Legend
1	Across flat

: Torque limiter F symbol

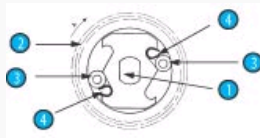
This device is situated inside the gearbox and is particularly recommended when gearbox protection is required in the event of accidental overloading.

In this system, the final gear is connected to the gearbox output shaft by means of a friction assembly.

In some cases, this device can be used for time adjustment or zero reset on timers.

The standard torque setting is from:

- 1.8 to 2.5 cm/kg for gearbox 81 021 and 81 033 0

: Freewheel device - Y system

This device, situated inside the gearbox, enables the output shaft to be rotated by an external force (manual or mechanical) independently of the final wheel of the gearbox.

A specially shaped cam (1) is directly fitted on the gearbox output shaft. The final wheel (2) of the gearbox pivots freely on this shaft and has a housing into which the cam fits (1).

Between the cam and final wheel two rollers are symmetrically located held in place under the pressure of two springs (4).

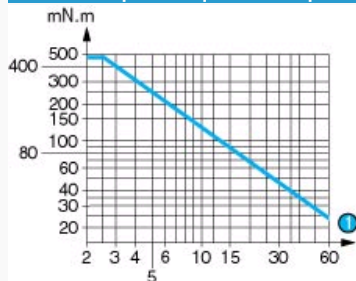
When the geared motor is energised, it causes the final wheel (2) to rotate which, via the two rollers (3), in turn drives the output shaft.

If, under external force, the output shaft is turned in the same direction as the final wheel but at a higher speed, the two rollers (3) release the final wheel and the shaft speed becomes independent of the speed of the final wheel.

The rollers can be located according to whether the final wheel is rotating clockwise or anti-clockwise.

Can be used with gearboxes 81 021 0 and 81 033 0.

N°	Legend
1	Cams
2	Einstellräder
3	Roller
4	

Curves : Graph of torque versus speed 82 344 0

N°	Legend
1	RPM