

SPECIFICATIONS

Voltage rating : 250V AC/DC

Current rating : 7A AC/DC

Withstanding voltage : 1500V AC/minute

Contact resistance : 20mΩ max

Temperature range : -40°C to +105°C

Insulation resistance : 1000MΩ min

MATERIAL

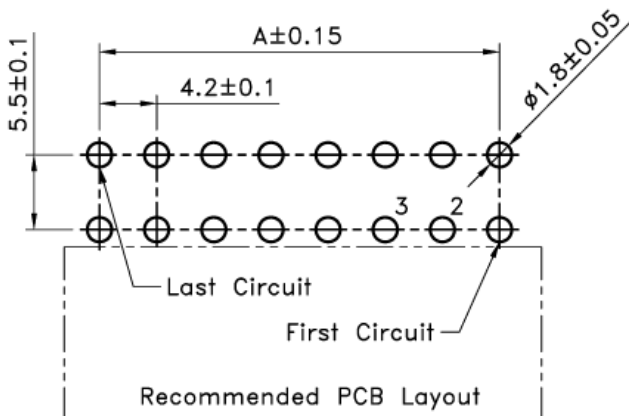
Insulator : Nylon66 (UL94V-2)

Insulator color : Transparnt White

Contact : Brass

Plating : Tin Plated

Poles	Dimensions(mm)	
	A	B
2	-----	5.60
4	4.20	9.80
6	8.40	14.00
8	12.60	18.20
10	16.80	22.40
12	21.00	26.60
14	25.20	30.80
16	29.40	35.00
18	33.60	39.20
20	37.80	43.40
22	42.00	47.60
24	46.20	51.80



TOLERANCE (mm)	APPROVALS	DATE	TITLE	AMPHENOL
X. ±0.3	DRAWN Stephane	05/Jan/2007	4.2 Power Wafer R/A Dip	Amphenol European Design Center
XX ±0.2	CHECKED Rob	05/Jan/2007		
X.XX ±0.15	APPROVED Rob	05/Jan/2007		
UNLESS OTHERWISE SPECIFIED	UNIT:	SIZE: A4	DRAWING N°	Scale N.A. Sheet 1 of 1
			MF42-RD-XX	REV. A