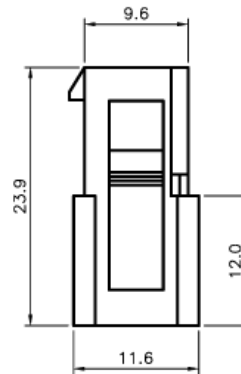
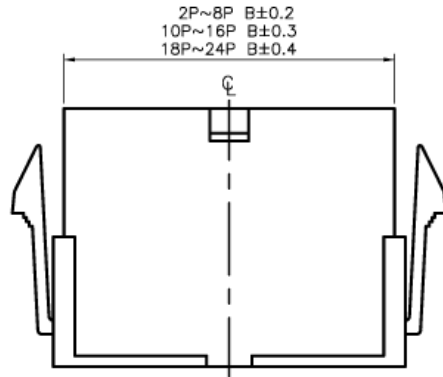
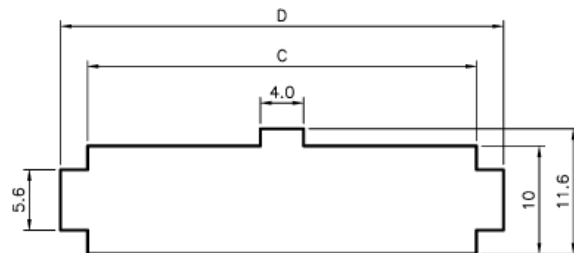


MATERIAL
Insulator : Nylon66 (UL94V-2)
Insulator color : Transpart White



Poles	Dimension (mm)			
	A	B	C	D
2	-----	5.50	5.80	10.80
4	4.20	9.70	10.00	15.00
6	8.40	13.90	14.20	19.20
8	12.60	18.10	18.40	23.40
10	16.80	22.30	22.60	27.60
12	21.00	26.50	26.80	31.80
14	25.20	30.70	31.00	36.00
16	29.40	34.90	35.20	40.20
18	33.60	39.10	39.40	44.40
20	37.80	43.30	43.60	48.60
22	42.00	47.50	47.80	52.80
24	46.20	51.70	52.00	57.00



Recommand Mounting Dimension

TOLERANCE (mm)	APPROVALS	DATE	TITLE 4.2 Power Housing For Male Contact	AMPHENOL Amphenol European Design Center	
X. ±0.3	DRAWN Stephane	05/Jan/2007			
XX ±0.2	CHECKED Rob	05/Jan/2007			
X.XX ±0.15	APPROVED Rob	05/Jan/2007			
UNLESS OTHERWISE SPECIFIED	UNIT : mm		SIZE : A4	DRAWING N°	MF42-HM-XX
					REV. A