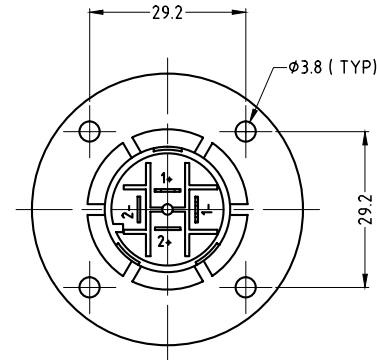
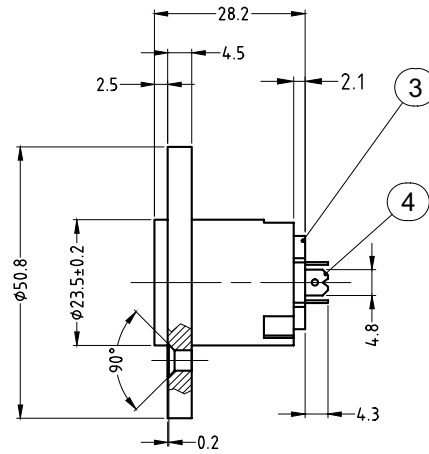
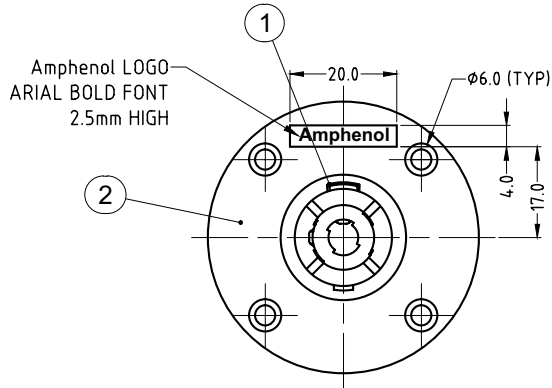


LEGEND  = KEY PRODUCT CHARACTERISTICS

REVISION HISTORY				
REV	REVISION HISTORY	BY	DATE	CHG No
1	FIRST ISSUE	T.N	12/07/11	



Item	Description	Material	Qty
4	CONTACT	QSn6.5 - 0.1, 0.5mm THK	4
3	REAR COVER	PA66 30GF BLACK	1
2	HOUSING	PA6 15%GF BLACK 94HB	1
1	LOCKING PATCH, NICKEL PLATE	H62 Y, T=0.3	1

Parts List

UNLESS OTHERWISE SPECIFIED TOLERANCE TO BE		THIS DOCUMENT IS THE PROPERTY OF AMPHENOL AUSTRALIA PTY. LTD.. NO PART THEREOF MAY BE REPRODUCED AND USED WITHOUT THE PRIOR WRITTEN CONSENT OF THE OWNER			
LINEAR	ANGULAR	MATL:	DRN:	DATE:	
X ± 0.5	X° ± 1°	SEE BOM	T.N	12/07/11	
XX ± 0.1	XX° ± 30°		CKD:	DATE:	
XXX ± 0.05	XXX° ± 15°		M.H	12/07/11	
BREAK ALL SHARP EDGES AND REMOVE ALL BURRS		APP'D:	P.M	DATE:	12/07/11
DO NOT SCALE		FINISH:			
DIMENSIONS IN MILLIMETRES		THIRD ANGLE PROJECTION		SCALE:	1:1

<b>Amphenol</b>		Amphenol Australia Pty Ltd 2 Fiveways Blvd Keysborough VIC 3171	
TITLE: <b>HIGH POWER CONNECTOR 4 POLE</b>		PART No: <b>SP-4-MC</b>	
CAD FILE: 55010778000110		DRAWING NO. 55010778-000-1	
		SHEET 1 OF 1	