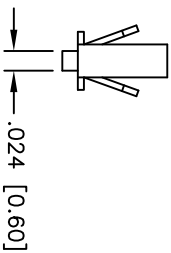
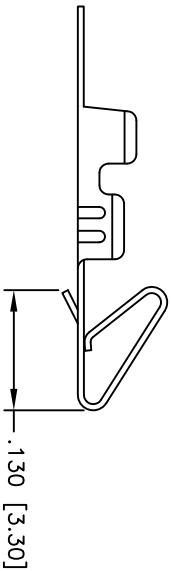
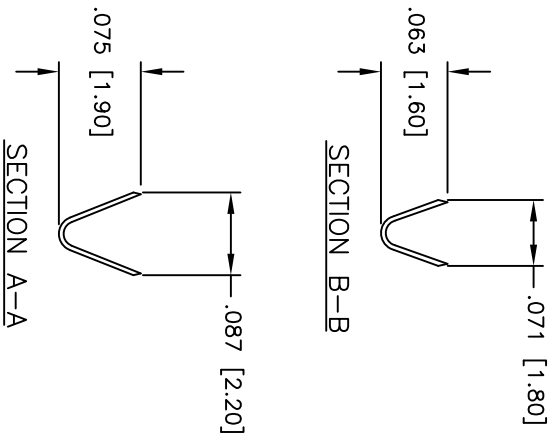
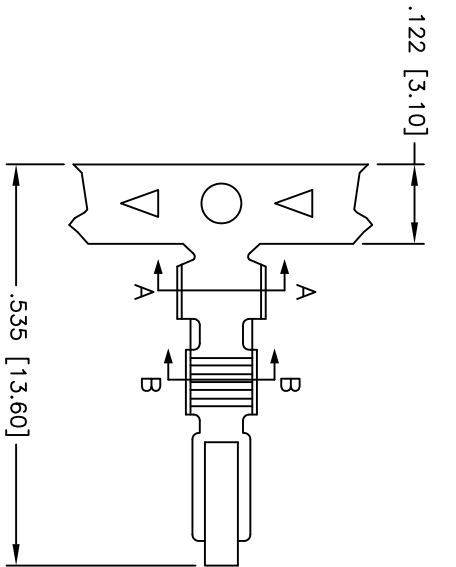


APPROVED: _____
 DATE: _____ TITLE: _____

Rev	AWO #	Description	Date	Appr
-		RELEASED	4/8/05	
A		REVISED SPEC.	11/18/10	



SPECIFICATIONS:

- Material: _____
- Contact: Brass
- Plating: _____
- Tin over Copper underplate overall
- Electrical: _____
- Wire range: 22-28 AWG
- Current rating: 2 Amps max
- Contact resistance: 20 mohms max
- Dielectric withstanding voltage: 1,500 VAC for 1 minute
- Operating temperature: -25°C to +85°C
- Packaging: _____
- R = loose cut
- R = tape and reel
- Environmental: _____
- Lead free, RoHS compliant

UNLESS OTHERWISE SPECIFIED
 ALL DIMENSIONS ARE INCHES [MM]
 TOLERANCES: EXCEPT AS NOTED
 INCHES Holes ±.10
 .X ±.10 ØXX ±.10
 .XX ±.020 ØXXX ±.015
 .XXX ±.015 ØXXXX ±.010

ADAM TECH
 909 Rahway Avenue, Union, NJ 07083
 Phone: 908-687-5000 Fax: 908-687-5710

CRIMP CONTACT

APPROVALS	DATE
DRAWN	SS
CHECKED	
APPROVED	

SIZE	PART NO.	REV.
X	MTA-C-X	A
REF:	SCALE: NTS	SHEET 1 OF 1

